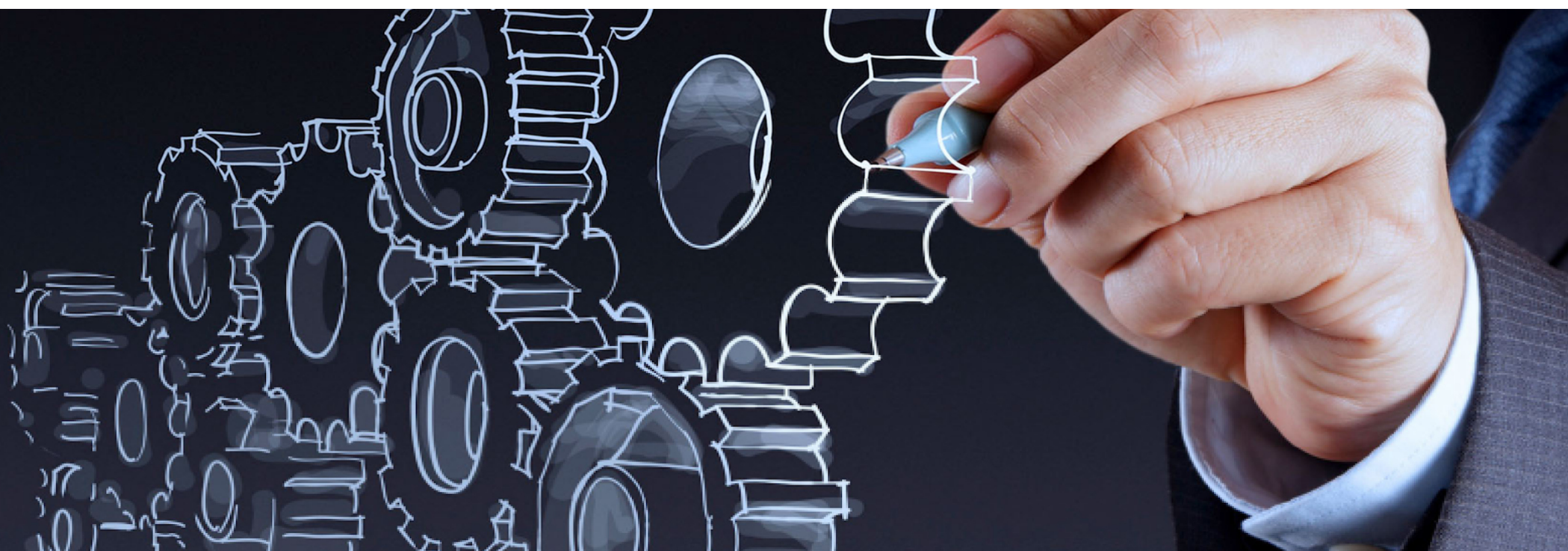


Alligator Company

Innovate Your Data Warehouse with Model Driven Data Vault Automation



Empower Business Users, Accelerate Delivery, and Gain Complete Control

Alligator Company - Data Consultancy

Torsten Glunde

Data Warehouse Automation und Modernization

Data Warehousing and Business Intelligence since 2002.

Core Competencies:

Modern Data Platform, Data Vault Automation, Analytics Engineering, Cloud DBMS

Methods:

ELT/ETL, SQL, CI/CD, Datavault, Information Modeling, ELM, DataOps



GENESEER ACADEMY
World-Class Training

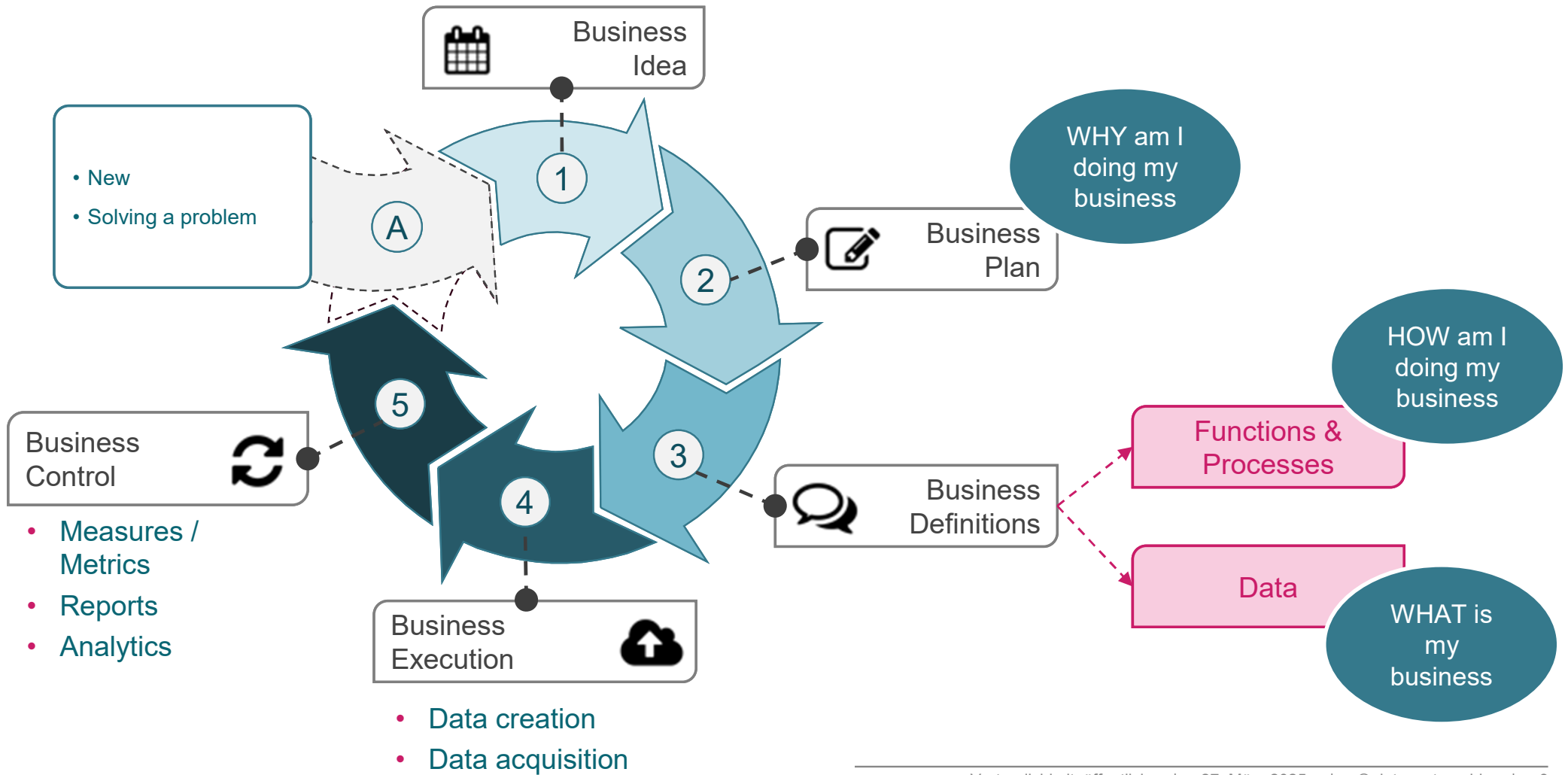
REFIN ELM MODEL
I G N
With the Business



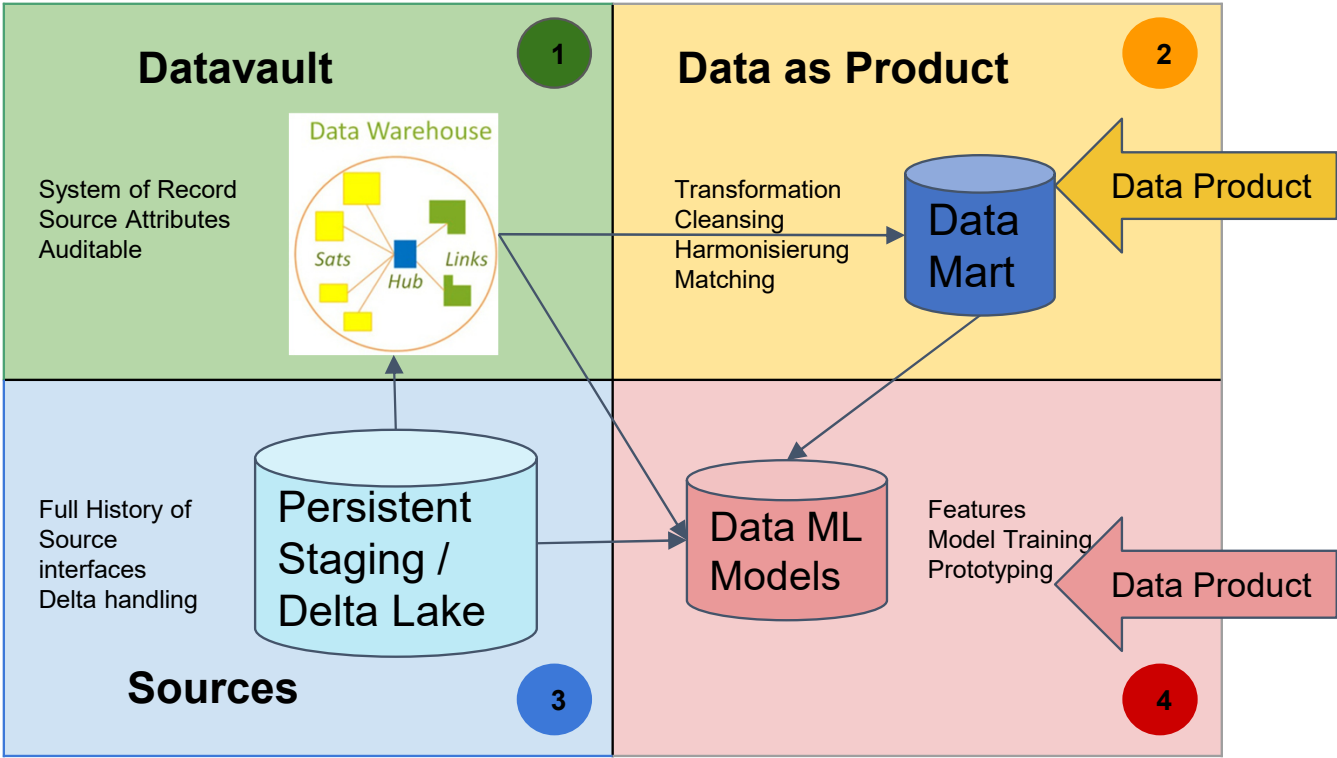
dataspot.

ellie.ai





Data Management Quadrant - Components - Data Products

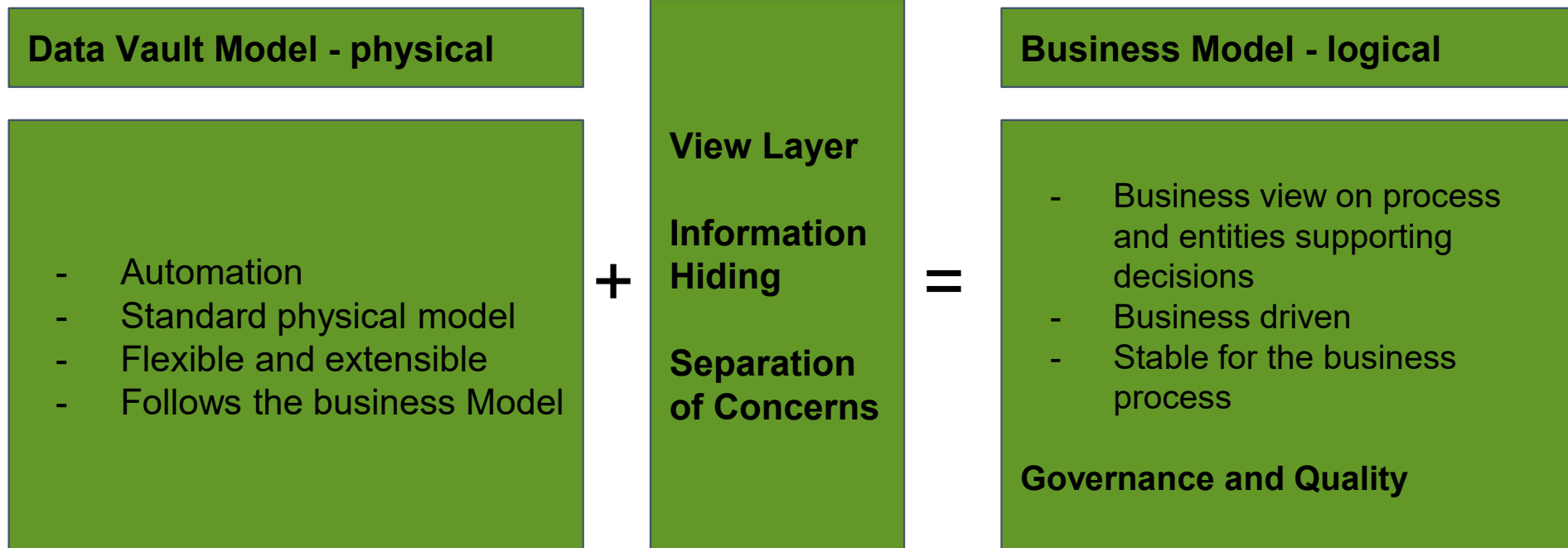


- 3 Raw data - application driven - no data governance
- 1 Facts, presented by a business model
- 2 Multiple truths - sourced by facts & derived data
- 4 Multiple truths - sourced by facts, derived & source data



Datavault - Model driven Approach

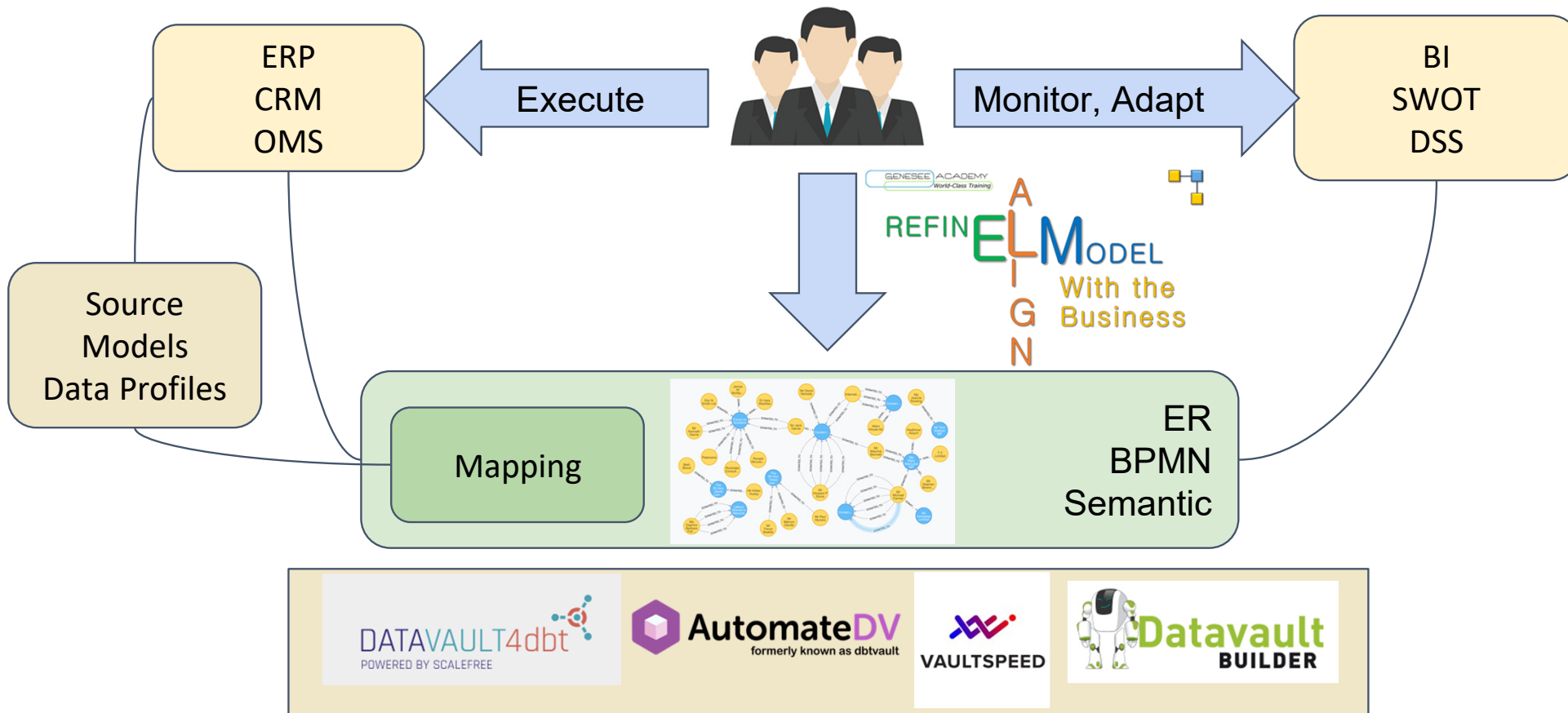
1



https://en.wikipedia.org/wiki/Edsger_W._Dijkstra
https://en.wikipedia.org/wiki/Edgar_F._Codd
https://en.wikipedia.org/wiki/David_Parnas



Automate the Automation - Model Driven - LLM assisted



Sample LLM Assisted Implementation

Input

- ELM Workshop → Align → Refine → Conceptual Model / CBC & NBR
- Mapping Source to Business → Source Dataset, PK, FK

Output

- Template based Datavault implementation
- Entity Views for granular access / Feature Store
- Semantic Model for Measures and Analytical Paths for guided Information retrieval

[Datavault GenAI Repository](#)



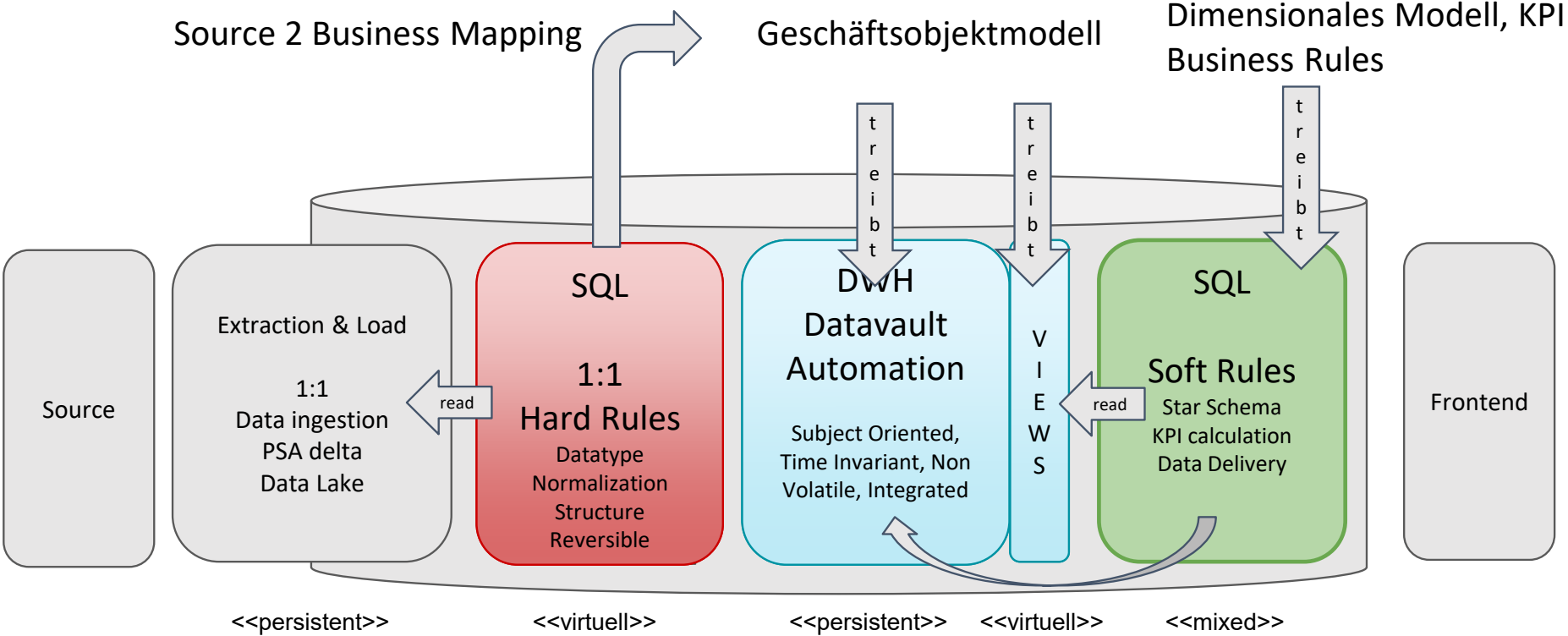
Ready to Transform Your Data Warehouse?



"Let's discuss how Data Vault Automation can revolutionize your data strategy."

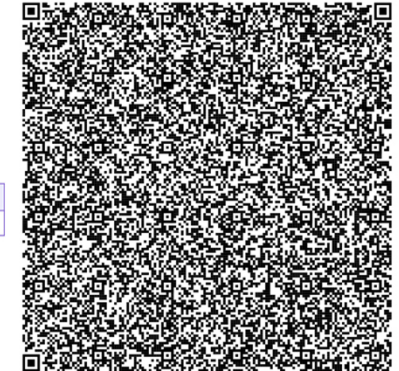
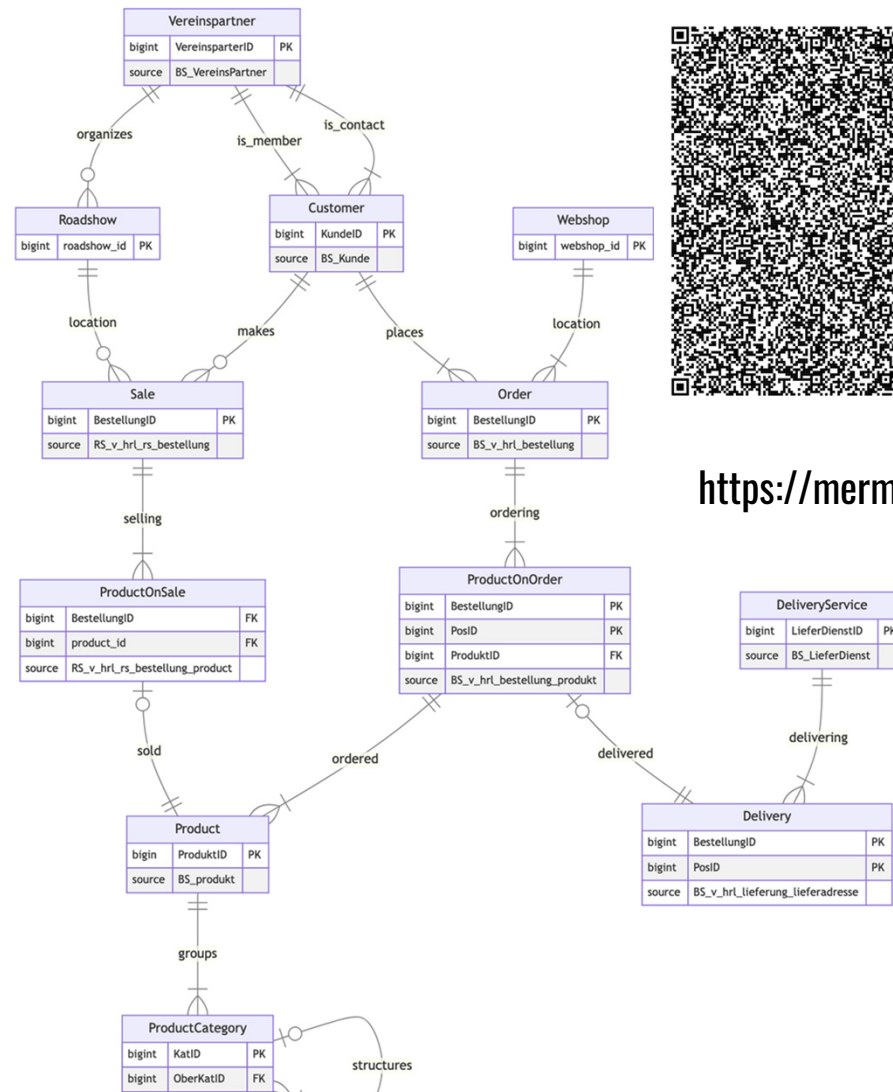


Datavault / DWA - Divide & Conquer your Data Transformation



Automate the Data Vault Lifecycle

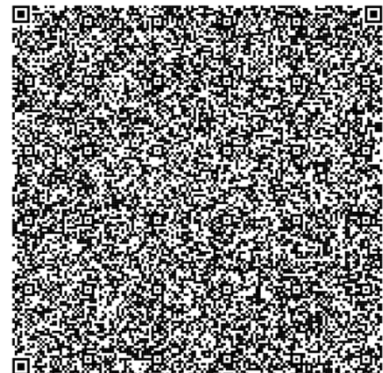
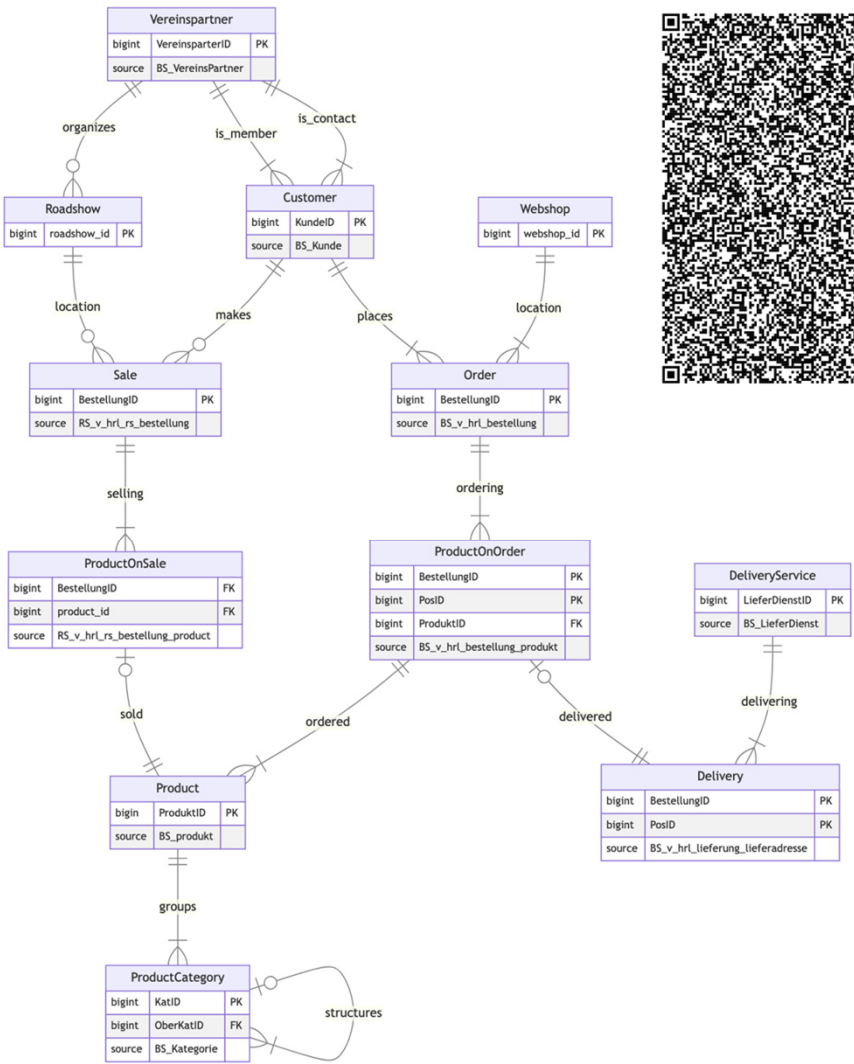
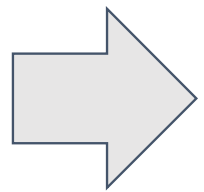
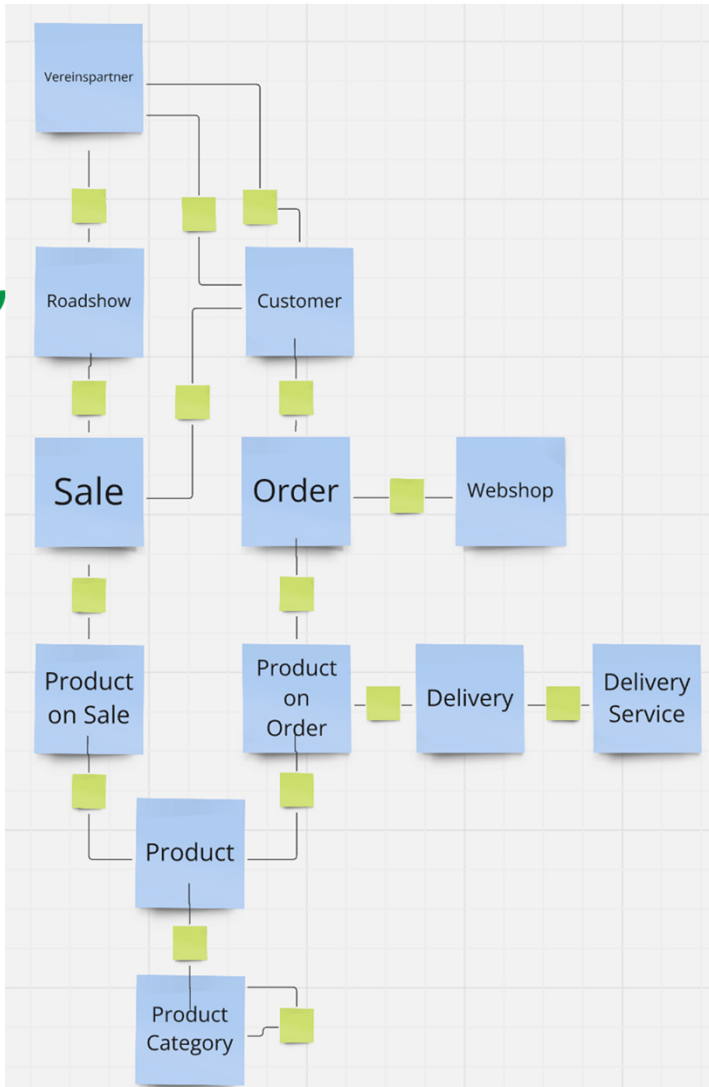
- "Imagine a world where business users define their data needs, and the Data Vault is automatically built."
- Data Vault implementation is incremental by nature and therefore perfectly suited for domain driven and decentralized approaches
- Data Vault Lifecycle starts with the business user requirements and should put his view of his business first - the IT views of source data second



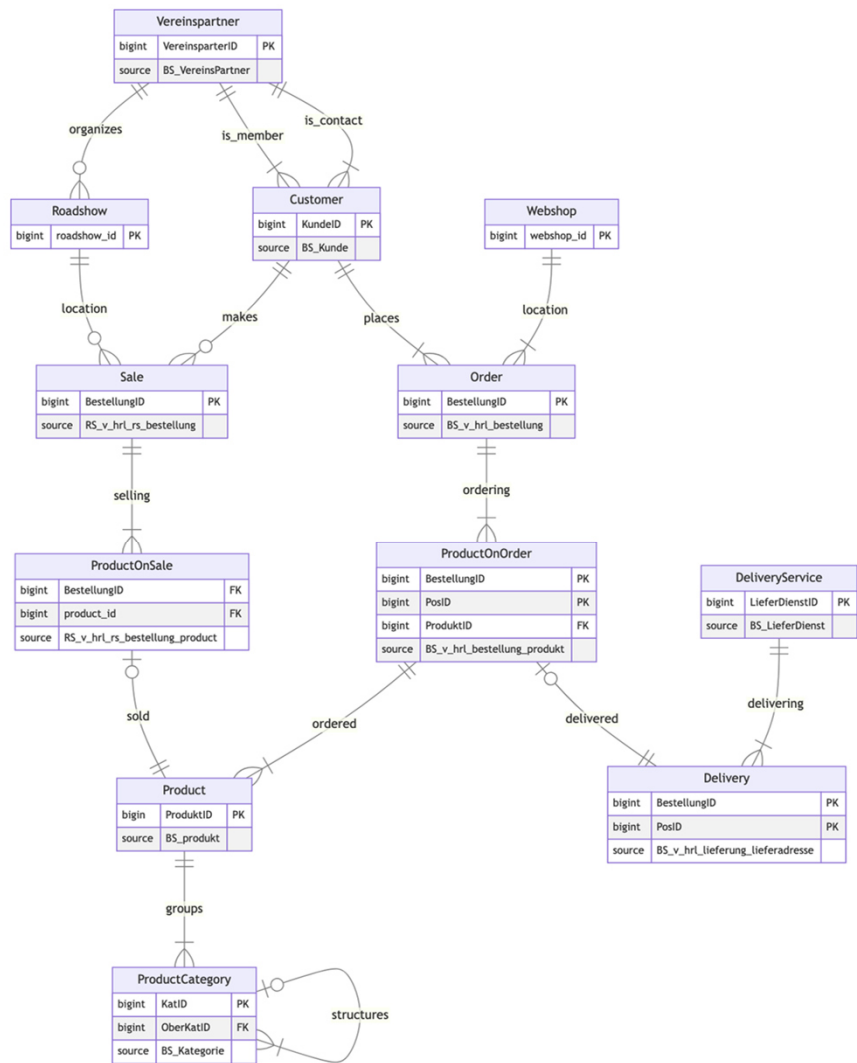
<https://mermaid.live>



Willibald - From ELM to Specification - Align - Refine



Willibald - Refine & Re-align



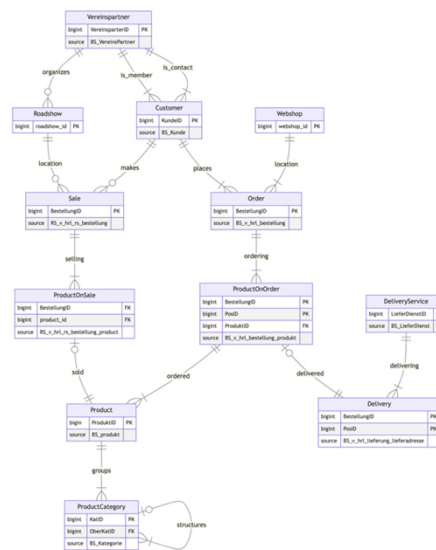
GPT

1. A **Vereinspartner** organizes multiple **Roadshows**.
2. A **Vereinspartner** can have multiple **Customers** as members.
3. A **Vereinspartner** can have multiple **Customers** as contacts.
4. A **Roadshow** can host multiple **Sales** as its location.
5. A **Sale** involves the selling of multiple **ProductOnSale** items.
6. A **Customer** can make multiple **Sales**.
7. A **Customer** can place multiple **Orders**.
8. A **Webshop** acts as the location for multiple **Orders**.
9. An **Order** consists of multiple **ProductOnOrder** items.
10. Each **ProductOnOrder** item corresponds to a specific **Product** that was ordered.
11. Each **ProductOnSale** item corresponds to a specific **Product** that was sold.
12. A **ProductOnOrder** can be associated with multiple **Deliveries**.
13. Each **DeliveryService** is responsible for delivering multiple **Deliveries**.
14. Each **Product** belongs to a single **ProductCategory**.
15. A **ProductCategory** can group multiple **Products**.
16. A **ProductCategory** can structure itself hierarchically by referencing other **ProductCategories**.



Streamline Development and Cut Time-to-Market

- Automated code generation for Data Vault components (Hubs, Links, Satellites).
- Rapid deployment and testing of data pipelines.
- Free up IT resources for complex tasks and innovation.



VAULTSPEED

Datavault BUILDER

AutomateDV
formerly known as dbtvault

DATAVAULT4dbt
POWERED BY SCALEFREE

